



## FCM Lysing Solution

### I.

: LSC01, LSC02

: 100T, 250T

:

:

### II.

#### Beckman Coulter

### III.

1.

2. 100 1

3.

4. 500 11×

5. 10

6. 2 ml PBS 300 - 400 × g 5

7. 0.5 ml PBS

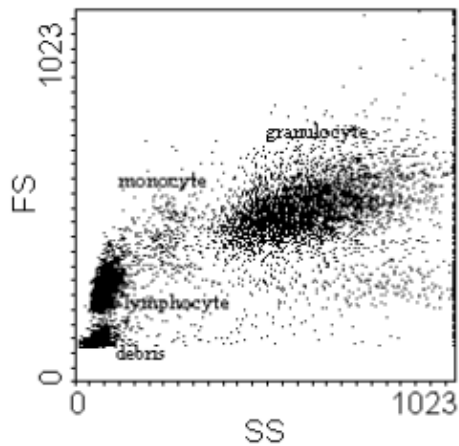
8.

2 - 8°C, 24

5

2

### IV.



. FSC/SSC

FCM Lysing Solution

Coulter EPICS® XL™

FSC SSC

